

WITH THANKS TO:

St John's Church and Father William; Rick and Lindsay Henshaw; Richard Humphreys; Patricia Ellison; Lisa Erickson; Ivo Tedbury and the Friends and Patrons of the Outcry Ensemble.

NEXT CONCERT: Autumn Season 2015

Thursday 12th November 2015, 7.30pm, St. John's Church

Ravel *Duo for Violin & Cello*
Stephenson *Duo for Violin & Piano*
Shostakovich *Piano Trio No. 1*

Tickets £15 Students £8
Advance booking at www.theoutcryensemble.com



THE OUTCRY ENSEMBLE was founded by two music students at the University of Cambridge in 2010. This is their nineteenth concert as Resident Orchestra of St. John's Church.

THE OUTCRY ENSEMBLE aims to offer accessible programmes of staple repertoire alongside new commissions by young composers. The players are on the cusp of professional careers in orchestras all over the world.

By supporting **THE OUTCRY ENSEMBLE** you are helping to secure the future of this dynamic young group. If you wish to learn more about our Friends and Patrons schemes, or would like to be added to our mailing list for information about concerts in advance, please contact Becky at:

ir

THE OUTCRY ENSEMBLE

THURSDAY 15th OCTOBER 2015
ST. JOHN'S CHURCH, NOTTING HILL

RUST
BEYOND THE HEART

TCHAIKOVSKY
SERENADE FOR STRINGS IN C MAJOR, OP. 48

- I. Pezzo in forma di Sonatina: Andante non troppo – Allegro Moderato
- II. Valse: Moderato – Tempo di Valse
- III. Élégie: Larghetto elegiaco
- IV. Finale (Tema russo): Andante – Allegro con spirit

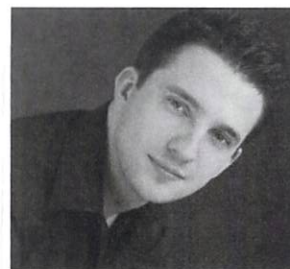
INTERVAL

SIBELIUS
SYMPHONY No. 1 IN E MINOR, OP. 39

- I. Andante, ma non troppo – Allegro energico
- II. Andante (ma non troppo lento)
- III. Scherzo: Allegro
- IV. Finale (Quasi una fantasia): Andate – Allegro molto – Andate assai – Allegro molto come prima – Andante (ma non troppo)

COMPOSER - JOEL RUST'S music is interested in slow transformations and sudden juxtapositions, the relationships between sounds, texts and images, and creating textures that exist on the boundaries between melody and harmony. He has received commissions from the Park Lane Group, Melos Sinfonia, the Choir of Gonville & Caius College, Cambridge, Filthy Lucre, Discantus, and Mr McFall's Chamber. His music has been performed throughout the UK, in France, Holland, Germany, Israel, and the USA, and has been broadcast on BBC Radio 3, Radio France Musique, and Radio 4 (Netherlands). In March 2014, Discantus released his work for six female voices, *sunt etenim pennae volucres mihi*, on their CD 'Music for a King'.

Joel is currently studying for a Doctorate at New York University. In 2013 he gained a Master's with Distinction at the Guildhall School of Music and Drama, where he studied with Julian Anderson, supported by the RVW Trust and the Leverhulme Trust. He graduated from the Emmanuel College, Cambridge, where he studied composition with Robin Holloway, in 2011, with a double-starred First, before spending a year at Harvard on a Herchel Smith Scholarship.



CONDUCTOR - JAMES HENSHAW read Music at Clare College, Cambridge, where he was a choral scholar and award winner as both conductor and pianist. He has recently started as Assistant Chorus Master at English National Opera and will be working on the whole of the 15/16 season.

Having graduated with a Distinction in Repetiteuring from the Guildhall School of Music and Drama, he assisted Mark Wigglesworth at the Aldeburgh Music Festival on *Owen Wingrave*, with a cast including whose cast included Susan Bullock, Janis Kelly, Richard Berkeley-Steele, Ross Ramgobin and Jonathan Summers. He also assisted Mark Wigglesworth at the Proms with the BBC National Orchestra of Wales and worked with Ivor Bolton on Monteverdi's *Orfeo* as Chorus Master at the Bayerischer Staatsoper in Summer 2014. He also is the Music Director of Ashted Choral Society with future engagements including Rutter's *Requiem* and Tippett's *A Child of Our Time*.

Most recently, James Henshaw has worked as Staff Conductor at English Touring Opera, where he assisted on *L'assiedo di Calais* and *Il furioso all'isola di San Domingo* as well as conducting *La bohème*.

THE OUTCRY ENSEMBLE

FIRST VIOLINS	VIOLAS	HORNS	FLUTES
Emily Davis	Joe Griffin	Charlie Ransley	Pasha Mansurov
Rose Hinton	Charley Lake	Victoria McBride	Frederico Paixao
Heloisa Ribeiro	Sophie Broadbent	Jerome	OBOES
Tobie Tripp	Florence Corr	Chalkford-Wilkes	James Hulme
Robbie Stern	Gerado Mendez	Flora Bain	Jessie Bescobie
Zanete Uskaine	Steliana Nedeva	TRUMPETS	CLARINETS
Carl Vallin	CELOS	Matt Rainsford	Chris Goodman
SECOND VIOLINS	Bethan Lloyd	Ed Phillips	Joy Boole
Julian Fish	Davina Shum	Imogen Hancock	BASSOONS
Sophie Phillips	James Greenfield	TROMBONES	Cerys Ambrose-
Cristina Agosta	Pedro Silva	Patrick Kenney	Evans
Masha Oguren	Robbie Stanley-	Ian Sankey	Antonia Lazenby
Daniel Gea	Smith	Jim Alexander	PERCUSSION
Katherine Sung	BASSES	TUBA	Jude Carlton
	Mark Lipski	Tom Steer	Keith Price
	Josie Jobbins		HARP Jan
	Jakub Cywinski		Gojanc